

## **ENGINE DRAIN LINES - MAINTENANCE PRACTICES (PT6A-114/PT6A-114A)**

### **1. General**

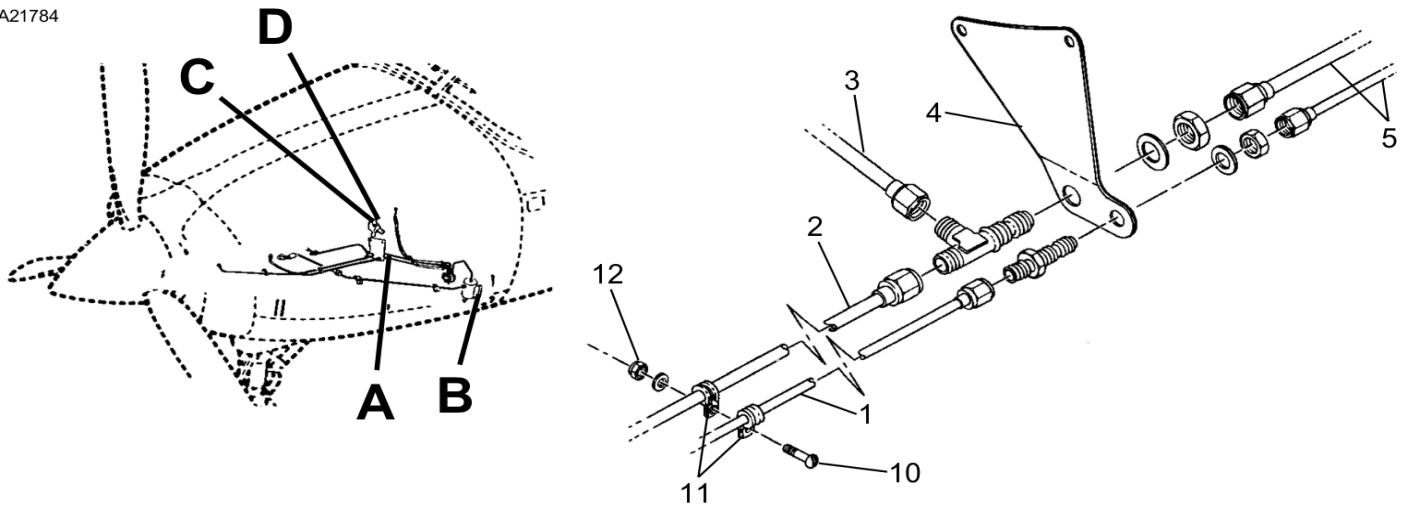
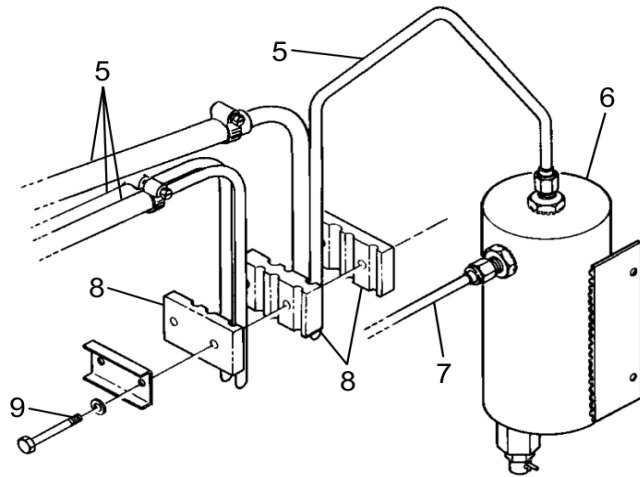
- A. A series of drain lines is installed to vent fluids overboard or to catch and retain for later disposal. Drains provided are: propeller shaft (1), forward (2) and aft (3) combustion chamber, fuel manifold (7), fuel control (14), EPA can (6), oil collection can and drain valves.

### **2. Engine Drain Lines Removal/Installation**

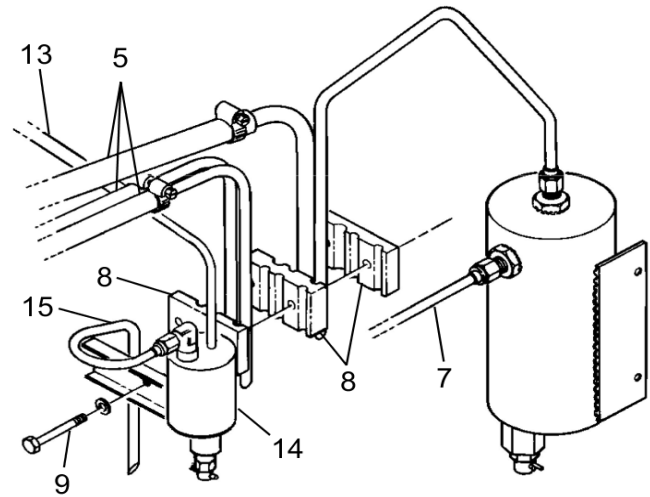
- A. Due to the simplicity of the engine drains installation, refer to Figure 201 for a guide to removal and installation.

Figure 201 : Sheet 1 : Engine Drains Installation

A21784

**DETAIL A****DETAIL B**

AIRPLANES 20800001 THRU 20800143  
AND 208B0001 THRU 208B0142

**DETAIL B**

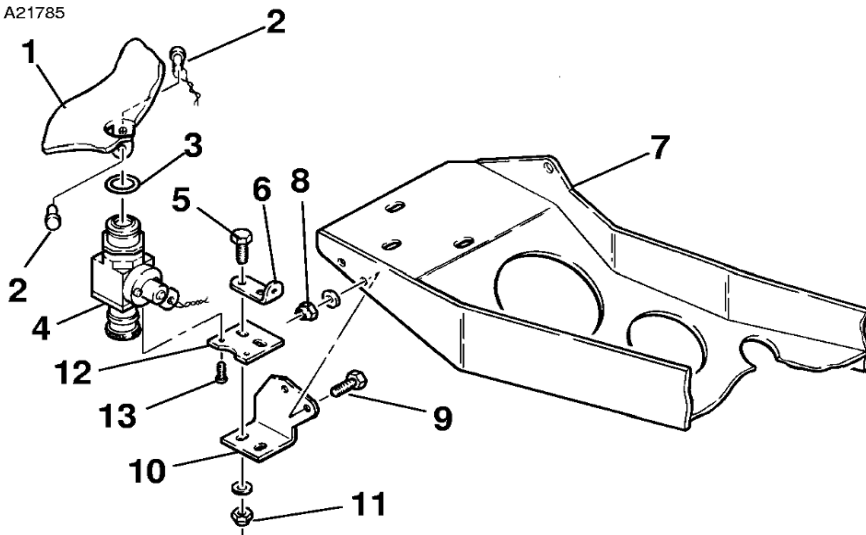
AIRPLANES 20800144 AND ON  
AND 208B0143 THRU 208B2196  
AND 208B2198 THRU 208B4999

1. PROPELLER SHAFT DRAIN LINE
2. FORWARD COMBUSTION CHAMBER DRAIN LINE
3. AFT COMBUSTION CHAMBER DRAIN LINE
4. SUPPORT BRACKET
5. OVERBOARD DRAIN LINES
6. FUEL EPA CAN
7. FUEL MANIFOLD DRAIN LINE
8. MOUNTING BLOCK
9. BOLT
10. SCREW
11. CLAMP
12. NUT
13. DRAIN HOSE
14. FUEL CONTROL UNIT LUBE OIL DRAIN CAN
15. DRAIN LINE

26561004  
26561010  
B26562004A  
B26562004

Figure 201 : Sheet 2 : Engine Drains Installation

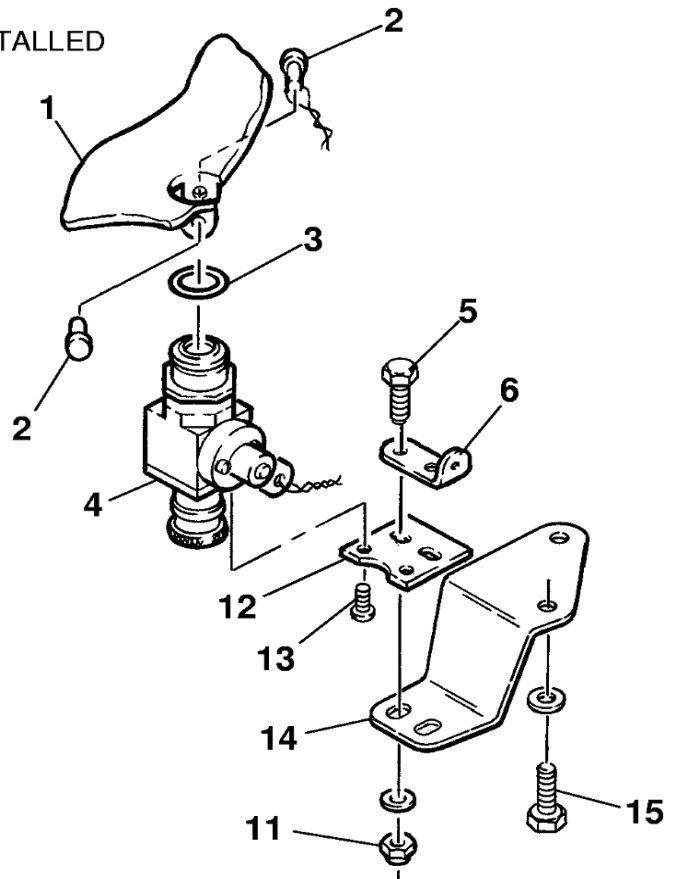
A21785



### DETAIL C

USED WHEN STANDBY ALTERNATOR IS INSTALLED

1. ENGINE OIL TANK SUMP
2. PIN
3. PACKING
4. DRAIN VALVE
5. BOLT
6. SAFETY-WIRE BRACKET
7. MOUNTING BRACKET ASSEMBLY
8. NUT
9. BOLT
10. BRACKET
11. NUT
12. BRACKET
13. SCREW
14. MOUNTING BRACKET
15. BOLT



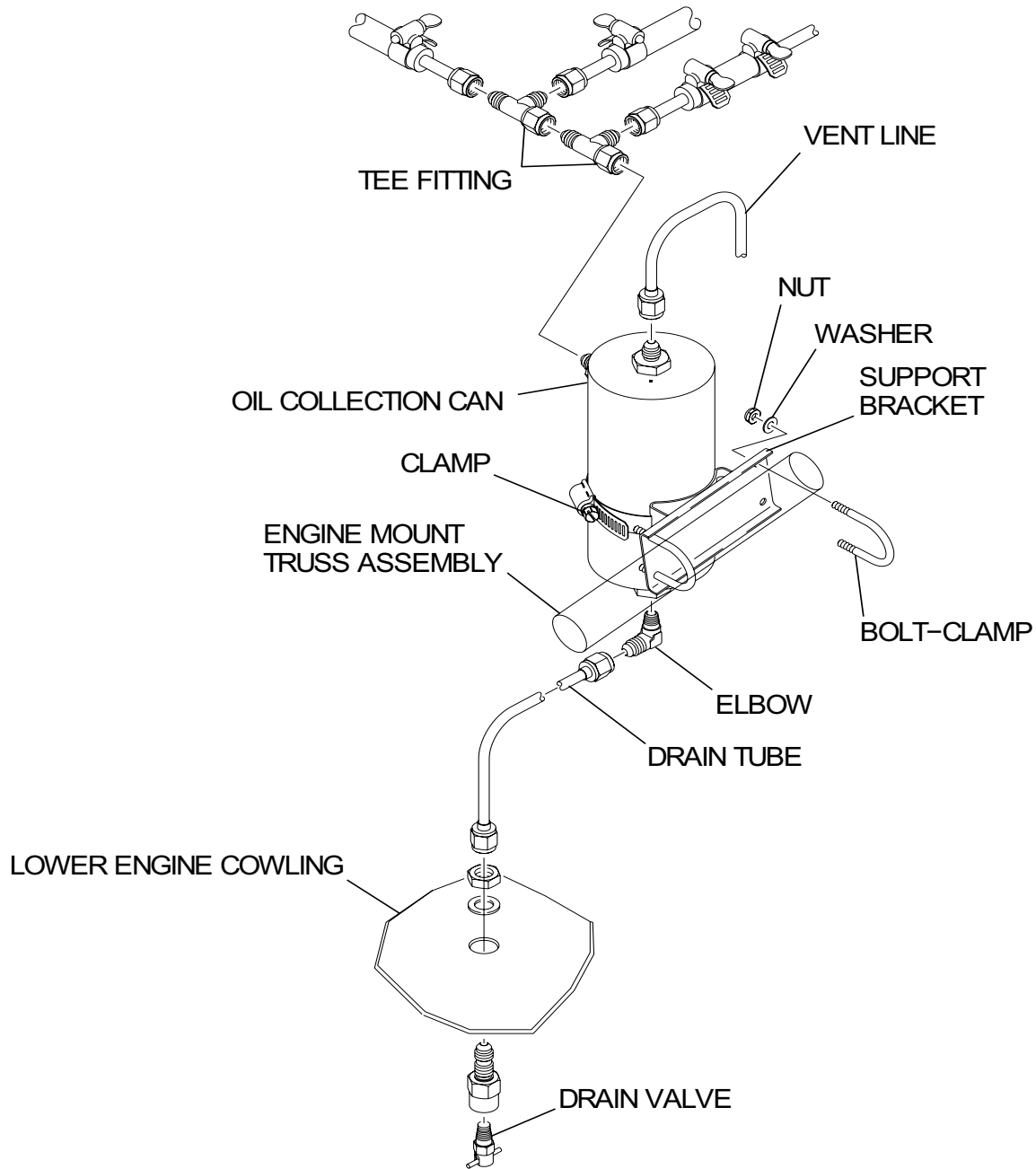
### DETAIL C

USED WHEN STANDBY ALTERNATOR IS NOT INSTALLED

C26562002  
C26561025

Figure 201 : Sheet 3 : Engine Drains Installation

A21779



### DETAIL D

AIRPLANES 20800242 AND ON AND 208B0435  
AND ON, AND AIRPLANES 20800001 THRU  
20800241 AND 208B0001 THRU 208B0434  
INCORPORATING SK208-122

D2656T1026